

## TABLE OF CONTENTS

### Bonus Content

List of Railroads by Region  
List of Assigned Reporting Marks and Uniform  
Alphabetic Codes for Railroad Identification

### A

#### Suppliers

Company Profiles ..... A-1

### B

#### Buyers' Guide

Buyers' Guide Table of Contents ..... B-1  
Buyers' Guide ..... B-3  
*Special Services*  
Car Repair ..... B-35  
Contracting ..... B-44  
Consulting ..... B-45  
    Attorneys ..... B-45  
    Consultants ..... B-45  
    Rail Finance ..... B-46  
    Lessors ..... B-46

### C

#### Freight Railroads

Freight Railroads ..... C-1  
Abbreviations of Railroad Officials' Titles ..... C-2  
Private Car Companies ..... C-57

### D

#### Passenger Railroads

Intercity Passenger Railroads ..... D-1  
Transit & Suburban Authorities ..... D-3  
Tourist Railroads & Museums ..... D-17  
Rail Industry Associations ..... D-35  
Agencies & Commissions ..... D-43

### E

#### Indexes

Officials ..... E-1  
Suppliers ..... E-72

**NOTICE TO SUBSCRIBERS:** From time to time, we permit reputable companies to send announcements of their products or services to our subscribers in the mail. Requests for this privilege are examined with great care, to be sure they will be of interest to our readers. If you prefer not to receive such mailings and want your name in our files only for mailing this publication, write us enclosing your current address mailing label to **The Pocket List of Railroad Officials**, P.O. Box 278, Medford, NJ 08055, USA.

*The Pocket List of Railroad Officials* (ISSN 0032-1826) is published quarterly by **S&P Global**, 55 Water Street, New York, NY 10041, USA. Subscription price is \$269 a year. Periodicals postage paid at Englewood, CO, and additional mailing offices. All prices are subject to change.

**POSTMASTER:** Please send address changes to **JOC Group Inc.**, *The Pocket List of Railroad Officials*, P.O. Box 3000, Northbrook, IL 60065-9742, USA.

Copyright © 2023 by **JOC Group Inc.** Printed in USA. All rights reserved. No part of this publication may be reproduced or utilized in any form or by any means, electronic or mechanical, including photocopying, recording, or by any information storage or retrieval system, without written permission from the Publisher. The Publisher has taken all reasonable steps to verify the accuracy of the content of this publication. The information in this book was obtained through a questionnaire sent to all companies listed in the February 2023 Edition. While the Publisher believes the information was accurate at the time of publication, changes may have occurred since then. **JOC Group Inc.** shall not be responsible for any errors or omissions that occur in this book or for the quality or practices of the companies represented.



**Associate Director,  
Product Management** Matthew DeNapoli  
matthew.denapoli@ihsmarkit.com 862-576-1868

**Editor** Heather Longo  
heather.longo@ihsmarkit.com 215-789-7442

**Sr. Production Coordinator** Carolyn Tizzano  
carolyn.tizzano@ihsmarkit.com

#### ANNUAL SUBSCRIPTION RATES

United States: US\$269 (plus \$18 shipping and handling and applicable sales tax)  
Foreign/Canadian orders: US\$269 (plus \$40 shipping and handling and applicable sales tax)

#### CUSTOMER SERVICE

The Pocket List of Railroad Officials  
P.O. Box 3000  
Northbrook, IL 60065-9742

In the US: 877-780-9858  
Outside the US: 847-763-4924  
pocketlist@omeda.com

Published by

**S&P Global**

55 Water Street, New York, NY 10041

**VP, Editorial & Publishing**  
Peter Tirschwell

© 2023 JOC Group Inc. All Rights Reserved.

**AMSTED RAIL**

311 S. Wacker Dr., Suite 5300, Chicago, IL 60606  
 312-922-4501; Fax: 312-922-4502  
 Web Site: www.amstedrail.com

**PROFILE**

● ○ ○ ○ ○ ○ ○  
 MECH. ENG. C&S REPAIR CONSULT. CONTRACT. OTHER

**PRODUCTS/SERVICES:**

Amsted Rail Company is a manufacturer of a complete portfolio of railcar components. Amsted Rail Company focuses on providing system solutions: complete rail car truck & braking systems (Trucks/Bogies, Wheels, Bearings, Axles, Hand Brakes, Slack Adjusters, Empty/Load Devices, Truck Mounted Brakes, Brake Cylinders, Truck Mounted Brake Rigging & Wear Prevention Components), various railcar devices such as pellet gate & empty load devices and end of car energy management systems (Couplers, Yokes, Draft Gears, Cast Draft Sills, Cushioning Units) for all heavy haul railways around the world. In addition, Amsted Rail Company provides track fastening solutions and asset monitoring (GPS & Condition Based Monitoring) solutions for transit and heavy haul rail.

**See our ad on page Tab C1**

Michael Carter, Pres.  
 William P. O'Donnell, Sr. V.P. Sales;  
 312-922-4508; Fax: 312-922-4517  
 E-Mail: wodonnell@amstedrail.com  
 Brad A. Myers, V.P. & Ch. Commercial Off.;  
 312-922-4540; Fax: 312-922-4517  
 E-Mail: bmyers@amstedrail.com  
 Mike Watts, Asst. V.P. Sales North America;  
 903-624-4142; Fax: 903-872-0102  
 E-Mail: mwatts@amstedrail.com

Kevin C. Kasperbauer, Dir. Sales; 503-830-3737;  
 Fax: 623-374-7045  
 E-Mail: kkasperbauer@amstedrail.com  
 Dean Polly, Dir. Sales; 940-497-3111  
 E-Mail: dpolly@amstedrail.com  
 Brian Lynch, Dir. Sales; 618-444-7211  
 E-Mail: blynch@amstedrail.com  
 Aaron Navarro, Dir. Sales; Mobile: 920-737-1994  
 E-Mail: anavarro@amstedrail.com  
 Darren Panczuk, Dir. Sales; Mobile: 219-306-2076  
 E-Mail: dpanczuk@amstedrail.com  
 Tim O'Donnell, Dir. Sales; Mobile: 717-979-9226  
 E-Mail: todonnell@amstedrail.com  
 Trey Wilson, Dir. Sales; 903-641-3223  
 E-Mail: twilson@amstedrail.com  
 Frank A. Pascasio, Dir. Sales Transit;  
 618-501-6178  
 E-Mail: fpascasio@amstedrail.com

**A. STUCKI COMPANY**

360 Wright Brothers Dr., Moon Township,  
 PA 15108  
 412-424-0560; Fax: 412-424-0014  
 E-Mail: sales@stucki.com  
 Web Site: www.stucki.com

**PROFILE**

● ○ ● ● ● ● ●  
 MECH. ENG. C&S REPAIR CONSULT. CONTRACT. OTHER

**PRODUCTS/SERVICES:**

Truck side bearings: eXtended Travel, roller, resilient, metal capped, and upgrade kits; body side bearing plate and wedge; friction shoes: metal and resilient padded; hydraulic stabilizers: new and reconditioned; brake beams; break beam wear guides: metal and polymer; brake beam replaceable head kits; brake shoe keys; brake shoes; center bowl liners; roller bearing adapters; pedestal roof

liners; truck center pins; bell cranks; sheave wheels; hand brakes; hand brake wheels; column guide and coupler shank wear plates; new and reconditioned draft gear; reconditioned yokes, couplers, bolsters and side frames; freight car and locomotive springs; repairs and parts; railcar repair and mobile repair units; wheelset turning and mounting; truck bottom rods; grating; locomotive bearings; turbochargers; track spikes; track materials; crane rail; locomotive fueling; grating and grating accessories.

**See our ad on page A-2**

John O'Bryan, CEO; 412-424-0560;  
 Fax: 412-424-0014  
 E-Mail: john.obryan@stucki.com  
 Ray Patterson, COO; 412-424-0560;  
 Fax: 412-424-0014  
 E-Mail: ray.patterson@stucki.com  
 Scott Driggers, Freight Division Pres.;;  
 412-424-0560; Fax: 412-424-0014  
 E-Mail: scott.driggers@stucki.com  
 Jeffrey D. Vodar, Sr. V.P. Sales; 312-952-0636;  
 Fax: 412-424-0014  
 E-Mail: jeff.vodar@stucki.com  
 Stephen P. Dobies, Sr. V.P. Tech. Serv. & Sales;  
 412-424-0566; Fax: 412-424-0014  
 E-Mail: stephen.dobies@stucki.com  
 Rob Cascioli, Sr. V.P. Industrial Div.;;  
 412-424-0560; Fax: 412-424-0014  
 E-Mail: rob.cascioli@stucki.com  
 Karl Stupnianek, V.P. Bus. Dev. & Int'l. Sales;  
 412-424-0566  
 E-Mail: karl.stupnianek@stucki.com  
 Marilena Moorby, Mgr. Customer Support;  
 412-424-0567; Fax: 412-424-0014  
 E-Mail: marilena.moorby@stucki.com  
 Anne Kocher, Dir. Mktg.; 330-499-2150  
 E-Mail: anne.kocher@stucki.com

**NOTE:**

This section provides **COMPANY PROFILES** for advertisers only. **COMPANY PROFILES** appear in alphabetical order.

Each **COMPANY PROFILE** provides headquarters and sales office addresses and phone numbers as well as personnel listings. As shown below, companies are categorized by mechanical, engineering, communications and signaling, repair, consulting, contracting and other. Primary products and services are described.

**PROFILE**

○ ● ○ ○ ○ ○ ○ ●  
 MECH. ENG. C&S REPAIR CONSULT. CONTRACT. OTHER

**PRODUCTS/SERVICES:**

Suppliers of batteries for locomotives, car lighting and signaling uses.

To search for suppliers and vendors by products and services offered, see the **BUYERS' GUIDE**, beginning on page B-1.

Did you know?

Nearly two-thirds of **The Pocket List's** targeted circulation of executives report that it is THE publication they rely on most when making purchasing decisions.

Don't miss your chance to reach them.  
 Contact:  
 sales@pocketlist.com



**Steel**

Amsted Rail ..... A-1  
 McConway & Torley, LLC ..... A-9  
 Strato, Inc. .... A-14

**Striker**

Amsted Rail ..... A-1  
 McConway & Torley, LLC ..... A-9  
 Strato, Inc. .... A-14

**Used and Reconditioned**

Greenbrier Rail Services ..... A-6

**CLEANERS**

**Air**

Motive Power Resources, Inc. .... A-9

**Cleaners (General)**

Railmark Track Works Inc. .... A-11

**Railhead Cleaning Equipment**

Railmark Track Works Inc. .... A-11

**COATINGS**

**Coatings (General)**

Greenbrier Rail Services ..... A-6  
 Williams-Hayward Protective Coatings, Inc. .... A-17

**High Solids and Waterborne**

Williams-Hayward Protective Coatings, Inc. .... A-17

**Insulating and Protective**

Williams-Hayward Protective Coatings, Inc. .... A-17

**Latex**

Williams-Hayward Protective Coatings, Inc. .... A-17

**No-VOC**

Williams-Hayward Protective Coatings, Inc. .... A-17

**Powder**

Williams-Hayward Protective Coatings, Inc. .... A-17

**Silicone**

Williams-Hayward Protective Coatings, Inc. .... A-17

**COILS**

**Armature Coils and Armature Winding**

Motive Power Resources, Inc. .... A-9

**Armature, Stator, Field and Rotor**

Motive Power Resources, Inc. .... A-9

**Armature, Stator, Rotor**

Motive Power Resources, Inc. .... A-9

**Coils (General)**

Motive Power Resources, Inc. .... A-9

**COMMUNICATIONS AND SIGNALING SYSTEMS**

**Calibration and Testing**

Bohr Electronics ..... A-4

**Cellular Phone Systems**

NW Signal Maintenance, LLC .. A-10

**Communications and Signaling Systems (General)**

Central Railway Manufacturing, LLC ..... A-4  
 McDermott Light & Signal ..... A-9  
 NW Signal Maintenance, LLC .. A-10

**Crossbucks**

JMA Railroad Supply Company.. A-8  
 Western-Cullen-Hayes, Inc. .... A-17

**Crossings**

**Crossings (General)**  
 NW Signal Maintenance, LLC .. A-10  
 Western-Cullen-Hayes, Inc. .... A-17

**End-of-Train Systems and Equipment**

Central Railway Manufacturing, LLC ..... A-4  
 JMA Rail Products ..... A-7  
 JMA Railroad Supply Company.. A-8  
 Rail-Tek Supply ..... A-11

**Flags**

JMA Rail Products ..... A-7  
 JMA Railroad Supply Company.. A-8  
 McDermott Light & Signal ..... A-9

**Head-of-Train Systems and Equipment**

Bohr Electronics ..... A-4  
 Central Railway Manufacturing, LLC ..... A-4  
 JMA Rail Products ..... A-7  
 JMA Railroad Supply Company.. A-8

**Installation and Maintenance**

McDermott Light & Signal ..... A-9  
 NW Signal Maintenance, LLC .. A-10

**Parts and Accessories**

**Interlocking Apparatus**  
 Central Railway Manufacturing, LLC ..... A-4  
**Parts and Accessories (General)**  
 Bohr Electronics ..... A-4  
 Central Railway Manufacturing, LLC ..... A-4  
 JMA Railroad Supply Company.. A-8  
 McDermott Light & Signal ..... A-9  
 Western-Cullen-Hayes, Inc. .... A-17

**Searchlight**

*McDermott Light & Signal  
 718-456-3606  
 See page A-9*

**Selective Calling and Signaling Equipment**

Central Railway Manufacturing, LLC ..... A-4

**Service and Repair**

Bohr Electronics ..... A-4

**Train Control Equipment**

Central Railway Manufacturing, LLC ..... A-4  
 McDermott Light & Signal ..... A-9

**Wireless Communication System**

Central Railway Manufacturing, LLC ..... A-4

**COMPONENT PARTS**

A. Stucki Company ..... A-1  
 Greenbrier Rail Services ..... A-6  
 Motive Power Resources, Inc. .... A-9  
 Multi-Service Supply ..... A-10

**COMPRESSORS**

JMA Rail Products ..... A-7  
 JMA Railroad Supply Company.. A-8

**COMPUTERS**

**Computers (General)**

Central Railway Manufacturing, LLC ..... A-4

**Locomotives**

Central Railway Manufacturing, LLC ..... A-4

**CONNECTORS**

**Articulated Freight Car**

Amsted Rail ..... A-1

**Bootleg**

Western-Cullen-Hayes, Inc. .... A-17

**Connectors (General)**

JMA Rail Products ..... A-7

**Electrical**

JMA Rail Products ..... A-7  
 Western-Cullen-Hayes, Inc. .... A-17

**Trainline**

JMA Rail Products ..... A-7

**CONSULTING SERVICES**

**Consulting Services (General)**

Railmark Track Works Inc. .... A-11

**Costs Models/Simulation**

Railmark Track Works Inc. .... A-11

**Damage Prevention Solutions**

Railmark Track Works Inc. .... A-11

**Design and Development**

DJJ ..... A-5

**Engineering**

**Consulting and Inspection**

DJJ ..... A-5  
 Greenbrier Rail Services ..... A-6

**Engineering (General)**

DJJ ..... A-5  
 FreightCar America, Inc. .... A-6  
 Greenbrier Rail Services ..... A-6

**Failure Mode Detection**

Railmark Track Works Inc. .... A-11



**Introducing the JMAXX Battery!**



**A True Locomotive Starting Battery!**

- Heaviest Strap/Intercell Connectors in the Industry!
- Thicker Plates for Maximum Capacity and Longer Life!
- Double layer of Glass Wrapping for Maximum Material Retention and Life!
- Cells are 100% cycled prior to shipment to insure Full Capacity!
- Cell Equalization prior to shipment for Longer Life!
- Custom Box Grid design on our plates For Maximum Capacity and Life!

**5 Year Warranty!**  
**2 Year Full, 3 Year Pro-Rated**





**Order Yours Today by Calling Our Sales Team at (812) 522-7200!**



**CLACKAMAS VALLEY RAILWAY**

A Division of Progressive Rail Incorporated  
9555 SE Last Road, Clackamas, OR 97015  
888-776-7245 (888-PRO-RAIL)  
Web Site: www.progressiverail.com

Dave Fellon, Pres.; 612-791-3255  
E-Mail: dfellon@progressiverail.com  
Layne Leitner, Ch. Oper. Off.; 612-791-1212  
E-Mail: leitner@progressiverail.com

**CLARENDON & PITTSFORD R.R. CO.**

Track Miles: 29.10  
**Administrative**  
One Railway Lane, Burlington, VT 05401  
802-658-2550  
Fax: 802-658-2553  
Web Site: www.vrs.us.com

**Rutland, VT:**

**Operations**  
118 Post St., Rutland, VT 05701 802-775-4356

David Wulfson, CEO; 802-658-2550  
Fax: 802-658-2553  
E-Mail: dwulfson@vrs.us.com  
Selden Houghton, Pres.; 802-658-2550  
Fax: 802-658-2553  
E-Mail: shoughton@vrs.us.com  
Shane Filskov, V.P. & Gen. Mgr.; 802-775-4356  
Fax: 802-775-4627  
E-Mail: sfilskov@vrs.us.com  
Mary Anne Michaels, CPA, CFO; 802-658-2550  
Fax: 802-658-2553  
E-Mail: mmichaels@vrs.us.com  
RoseAnne Graham, Human Resources Mgr.;  
802-861-6045  
Fax: 802-651-5543  
E-Mail: rgraham@vrs.us.com  
Frank Rogers, V.P. Bus. & Interline Dev.; 802-238-0124  
Fax: 802-658-2553  
E-Mail: frogs@vrs.us.com  
Perry Martel, Dir. Mktg.; 802-861-6059  
Fax: 802-658-2553  
E-Mail: pmartel@vrs.us.com  
Joe Painting, Rate & Contract Analyst & Ag. Acct.  
Rep.; 802-861-6043  
Fax: 802-658-2553  
E-Mail: jpainting@vrs.us.com  
Amanda Ball, Mgr. Mktg. Cust. Serv.; 802-861-6053  
Fax: 802-658-2553  
E-Mail: aball@vrs.us.com  
George Zwolen, Ch. Mech. Off.; 802-861-6274  
Fax: 802-658-2553  
E-Mail: gzwolen@vrs.us.com  
Charlie Lemieux, Ch. Eng. Special Proj.; 802-861-6051  
Fax: 802-658-2553  
E-Mail: clemieux@vrs.us.com  
Ben Delorme, Supt. Sig.; 802-775-4356  
Fax: 802-775-4627  
E-Mail: bdelorme@vrs.us.com  
RT Boucher, Ch. Eng. MoW; 802-775-4356  
Fax: 802-775-4627  
E-Mail: rtboucher@vrs.us.com  
Reed Swahn, Oper. Mgr.; 802-775-4356  
Fax: 802-775-4627  
E-Mail: rswahn@vrs.us.com  
Eric Alsvig, Supt. Loco. & MoW Equip.; 802-775-4356  
Fax: 802-775-4627  
E-Mail: ealsvig@vrs.us.com  
David Brimmell, Gen. Agent & Cust. Serv.;  
802-862-2503  
Fax: 802-658-2553  
E-Mail: vrscustomerservice@vrs.us.com

**CLARKDALE ARIZONA CENTRAL RAILROAD, LC**

Track Miles: 80  
Gauge: Standard  
Routes: Clarkdale to Drake, AZ  
Total Locomotives: 4  
Diesels Electric: 4  
Total Cars: 3  
Flat Cars: 1, Hoppers: 1,  
Maintenance of Way Cars: 1  
300 N. Broadway, Clarkdale, AZ 86324 928-634-4393  
800-293-7245  
Fax: 928-639-1653  
Web Site: www.clarkdaleazcentral.com

Daniel Adair, Gen. Mgr.; 903-373-3378  
E-Mail: dadair@verdecanyonr.net  
Roman Soqui, D.S.L.E.; 928-634-4393  
E-Mail: roman@clarkdaleazcentral.net

**CLEVELAND AND CUYAHOGA RAILWAY, LLC  
CCRL**

The Cleveland Commercial Railroad, now known as the Cleveland and Cuyahoga Railway, LLC (CCRL), operates on 35 miles of track in Northern Ohio, while the wholly owned now Cleveland Port Railway (CHB) manages rail switching services. CCRL consists of two distinct line segments, one from Cleveland, OH to Glenwillow, OH and the other from Von Willer Yard, Cleveland to Aurora, OH.

Track Miles: 35  
Routes: VNWLR Von Willer, OH NS; GLNWI  
Glenwillow, OH WE  
4200 East 71st Street, Cleveland, OH 44105  
216-658-1383  
Web Site: www.omnitrax.com  
Nate Mazo, Gen. Mgr., E-Mail: nmazo@omnitrax.com  
Julie Slagle, Mktg. Mgr.; 303-398-4539  
E-Mail: jslagle@omnitrax.com  
Doug Ernestes, V.P. Sales; 513-882-6988  
E-Mail: dernstes@omnitrax.com

**CLEVELAND PORT RAILWAY**

With the recent purchase of the Cleveland Commercial Railroad (CCRL) and its wholly owned subsidiary, Cleveland Harbor Belt Railroad (CHB), the OmniTRAX family of railroads has expanded its current presence in Cleveland through the already existing Newburgh & South Shore Railroad. The CHB provides efficient access through the Great Lakes and Saint Lawrence Seaway with port-based warehousing solutions.

Track Miles: 4  
Routes: NS & CSXT: Port of Cleveland  
4200 East 71st St., Cleveland, OH 44105 216-658-1383  
Web Site: www.omnitrax.com  
Nate Mazo, Gen. Mgr., E-Mail: nmazo@omnitrax.com  
Julie Slagle, Mktg. Mgr.; 303-398-4539  
E-Mail: jslagle@omnitrax.com  
Doug Ernestes, V.P. Sales; 513-882-6988  
E-Mail: dernstes@omnitrax.com

**CLINTON TERMINAL RAILROAD**

Track Miles: 3.5  
Total Locomotives: 2  
Diesels Electric: 2  
Total Cars: 4  
Box Cars: 1, Cabooses: 1, Passenger Cars & Coaches: 2  
P.O. Box 754, Clinton, NC 28329 910-592-2187  
Robert Lowe, Pres.; 717-877-6087  
E-Mail: rlowe63778@aol.com

**CLOQUET TERMINAL RAILROAD COMPANY INC.**

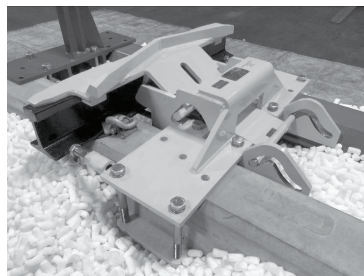
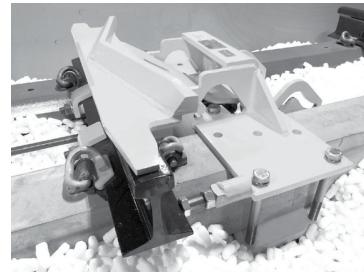
Track Miles: 3.5  
Gauge: Standard  
Total Locomotives: 3  
Diesels: 3  
Total Cars: 211  
Box Cars: 15, Cranes: 1, Flat Cars: 185,  
Gondolas: 10  
315 St. Louis Ave., Dunlap Island, Cloquet, MN 55720  
218-878-0604  
Fax: 218-879-6558  
Bruce Baker, Gen. Mgr.; 218-878-0604  
Fax: 218-879-6558  
E-Mail: bruce.baker@cloquet-trc.com

**CMC RAILROAD, LLC**

Track Miles: 1.5  
P.O. Box 605, Dayton, TX 77535-0605 936-258-4030  
Fax: 936-258-4031  
Web Site: www.cmcrailroad.com  
Marcus Goering, Pres. & CEO; 936-258-4030  
Fax: 936-258-4031  
E-Mail: m.goering@cmcrailroad.com

**Model CX Bi-Directional Derail for  
Wood, Steel, or Concrete Ties**

- Universal Fit
- No Sizing
- No Adzing
- No Shimming
- No Cropping Tie Plates
- No Removal of Anchors



US & CA PATENT PENDING



**WESTERN-CULLEN-HAYES, INC.**  
2700 West 36th Place Chicago, IL 60632-1617  
Phone (773) 254-9600 Fax (773) 254-1110  
Web Site: www.wch.com E-mail: wch@wch.com



# TRANSIT & SUBURBAN AUTHORITIES

## ATLANTA (GA) / METROPOLITAN ATLANTA RAPID TRANSIT

### Atlanta (GA)

#### METROPOLITAN ATLANTA RAPID TRANSIT MARTA

Track Miles: 120  
Gauge: 56.5 in.  
Routes: 6 - East, West, South, North, Northeast and Proctor Creek  
Total Locomotives: 6  
Diesels: 3, Switchers: 3  
Total Cars: 324  
Flat Cars: 3, Hoppers: 1,  
Maintenance of Way Cars: 2, Passenger Cars & Coaches: 318  
2424 Piedmont Rd. NE, Atlanta, GA 30324  
404-848-5000  
Paratransit Information: 404-848-5826  
Marta Police: 404-848-4900  
Customer Service: custserv@itsmarta.com  
Customer Information: schedinfo@itsmarta.com  
Web Site: www.itsmarta.com

#### Officers

Freda B. Hardage, Chair (Fulton County);  
404-848-5044  
William F. Floyd, V. Chair (DeKalb County);  
404-848-5044  
Robert L. Ashe III, Treas. (City of Atlanta);  
404-848-5044  
Roberta Abdul-Salaam, Sec. (Clayton County);  
404-848-5044

#### Directors

Al Pond, Dir. (Fulton County); 404-848-5044  
Roderick E. Edmond, Dir. (City of Atlanta);  
404-848-5044  
Ryan C. Glover, Dir. (City of Atlanta); 404-848-5044  
Jim Durrett, Dir. (DeKalb County); 404-848-5044  
Roderick A. Frierson, Dir. (DeKalb County);  
404-848-5044  
Rita A. Scott, Dir. (DeKalb County); 404-848-5044  
Alicia M. Ivey, Dir. (Fulton County); 404-848-5044  
Jerry R. Griffin, Dir. (Clayton County); 404-848-5044  
Thomas Worthy, Dir. (Governor Appointee)

#### Ex-Officio Members

Russell McMurry, Ex-Officio Member (GA Dept. of  
Trans.); 404-848-5044  
Christopher Tomlinson, Ex-Officio Member (GA  
Regional Trans. Authority); 404-848-5044

#### Executive Personnel

Jeffrey A. Parker, Gen. Mgr. & CEO; 404-848-5313  
Elizabeth O'Neill, Chief Coun.; 404-848-5184  
Tyrene Huff, Exec. Sec. to CEO/Gen. Mgr.;  
404-848-5352  
Luz Borrero, Ch. Administrative Officer; 404-848-5222

#### Finance

Kevin Hurley, Interim Ch. Fin. Off.; 404-848-5314  
Donald Williams, Interim Asst. Gen. Mgr. Plan.;  
404-848-4401  
Franklin Rucker, Chief Capital Prog. Png. &  
Innovation; 404-848-5000

#### Law

Jonathan Hunt, Chief Corp. Law; 404-848-6698  
Melissa Mullinax, Chief of Staff; 404-848-5169  
Vacant, Dir. Corp. Bus. Strategy; 404-848-5676  
Emil Tzanov, Asst. Gen. Mgr. Internal Audit;  
404-848-5594  
Donna Jennings, Dir. Risk Mgmt.; 404-848-4501

#### Technology

Kirk Talbott, Asst. Gen. Mgr. Tech./Ch. Info. Off.;  
404-848-5273

#### Police

Wanda Dunham, Chief of Sys. Safety, Security &  
Emergency Mgmt.; 404-848-4917  
Joseph Dorsey, Deputy Ch. Police; 404-848-4908

#### Employee Relations

LaShanda Dawkins, Asst. Gen. Mgr. Human Resources;  
404-848-5778  
Paula Nash, Exec. Dir. Diversity & Inclusion;  
404-848-5408  
Vacant, Dir. Employee Rels.; 404-848-5704

#### Operations

David Springstead, Chief Rail Opers.; 404-848-3438

### Austin (TX)

#### CAPITAL METRO TRANSPORTATION AUTHORITY

Track Miles: 163  
Total Cars: 10  
Passenger Cars & Coaches: 10  
2910 E. 5th St., Austin, TX 78702 512-389-7400  
Web Site: www.capmetro.org  
Dottie Watkins, Pres. & CEO; 512-389-7439  
E-Mail: dottie.watkins@capmetro.org  
Andrew Skabowski, Exec. V.P. & Ch. Operating Off.;  
512-771-1746  
E-Mail: andrew.skabowski@capmetro.org  
Muriel Friday, V.P. Rail Opers.; 512-852-7286  
E-Mail: muriel.friday@capmetro.org  
Ronika Lockett, Prog. Mgr. Rail Trans.; 512-852-7265  
E-Mail: ronika.lockett@capmetro.org  
David Bennett, Prog. Mgr. Fleet Serv.; 512-852-7258  
E-Mail: david.bennett@capmetro.org  
Ray Kite, Prog. Mgr. IV, MOW & Bridges;  
512-852-7296  
E-Mail: ray.kite@capmetro.org  
Justin Morrison, Proj. Mgr. IV, Rail Systems;  
512-595-2621  
E-Mail: justin.morrison@capmetro.org  
Brian Carter, V.P. Mktg.; 512-389-7428  
E-Mail: brian.carter@capmetro.org  
Enjouline Dougherty, Proj. Mgr. I, Rail Systems;  
512-852-7277  
E-Mail: enjouline.dougherty@capmetro.org

### Baltimore (MD)

#### MARYLAND TRANSIT ADMINISTRATION/MARC TRAIN SERVICE

Track Miles: 202  
Gauge: 4 ft. 8.5 in.  
Routes: 220 Heavy Rail Route Miles  
Total Locomotives: 96  
Diesels: 42, Locomotives: 48,  
Locomotives Electric: 6  
Total Cars: 177  
Passenger Cars & Coaches: 177  
1600 Ludlow St., Building 7, Baltimore, MD 21230  
410-856-4808  
Fax: 410-856-4800  
Web Site: www.mta.maryland.gov  
Paul Krysowaty, Deputy Dir. & Chief Facilities Off.;  
410-856-4820  
E-Mail: pkrysowaty@mdot.maryland.gov  
William Michael, Asst. Chief Facilities Off.;  
410-856-4830  
E-Mail: wmichael@mdot.maryland.gov  
David Johnson, Chief Trans. Off.; 410-856-4821  
E-Mail: djohnson25@mdot.maryland.gov  
Brian Bolger, Tr. Mast., Brunswick Line; 443-610-9895  
E-Mail: bbolger@mdot.maryland.gov  
Maria Reaves, Tr. Mast.,  
E-Mail: mreaves2@mdot.maryland.gov  
Pamela Moore, Tr. Mast.,  
E-Mail: pmoore1@mdot.maryland.gov  
Charles "Brian" Amos, Ch. Mech. Off.; 410-856-4813  
E-Mail: camos@mdot.maryland.gov  
Katherine Read, Asst. Chief Trans. Off.; 410-856-4816  
E-Mail: kread@mdot.maryland.gov  
Dean Del Peschio, Dir.; 410-856-4809  
E-Mail: ddelpeschio@mdot.maryland.gov  
Brian Ruch, Equip. Inspector/Specialist; 410-856-4827  
E-Mail: bruch@mdot.maryland.gov  
Andrea Farmer, Deputy Chief Oper. Off., Contracted  
Serv.; 410-856-4810  
E-Mail: afarmer2@mdot.maryland.gov

### Boston (MA)

#### KEOLIS COMMUTER SERVICES

Operates the Massachusetts Bay Transportation  
Authority (MBTA) commuter rail system.  
Total Locomotives: 86  
Locomotives: 86  
Total Cars: 475  
Passenger Cars & Coaches: 475  
470 Atlantic Ave., 5th Floor, Boston, MA 02210  
617-222-8001  
E-Mail: info@keoliscs.com  
Web Site: www.keoliscs.com

Abdellah Chajai, Gen. Mgr.; 857-327-2576  
E-Mail: abdallah.chajai@keoliscs.com  
John Killeen, V.P. Asset Mgmt.; 617-222-8733  
Mobile: 857-772-2632  
E-Mail: john.killeen@keoliscs.com  
Richard Dean, V.P. Serv. & Delivery; 617-222-8700  
E-Mail: richard.dean@keoliscs.com  
Tory Mazzola, Dir. Public Affs.; 617-222-8226  
E-Mail: tory.mazzola@keoliscs.com

#### Passenger Operations Department

William Layton, Dir. Cust. Serv.; 617-222-8066  
E-Mail: linda.dillon@keoliscs.com

#### Engineering Department

John Steinger, Ch. Eng. Off.; Mobile: 857-321-9882

#### Mechanical

Gordon Marsh, Technical Dir.; 617-222-8251  
Iain Nairne, Ch. Mech. Off.; 617-222-8439  
E-Mail: iain.nairne@keoliscs.com  
Randy Horrocks, Deputy Ch. Mech. Off.; 617-222-6354

#### Human Resources

Christine Goodheart, V.P. Human Resources & Trng.;  
617-222-8670

#### EEO/Diversity

Kerin McManus, Dir. Diversity & Inclusion;  
617-222-8235

#### Safety and Training

Kelly Andrews, V.P. Safety, Security & Environment;  
617-222-7501  
E-Mail: kelly.andrews@keoliscs.com

#### Finance & Procurement

Manuel Liongson, Ch. Fin. Off. & V.P. Fin., Plan. &  
Performance; Mobile: 617-620-3922  
E-Mail: manuel.liongson@keoliscs.com  
Phil O'Donnell, Deputy CFO; 617-222-8270  
E-Mail: phil.odonnell@keoliscs.com  
Craig Beckman, V.P. Digital Solutions; 857-248-1650  
E-Mail: craig.beckman@keoliscs.com  
Karl Bernhardt, Contract Mgr.; 617-222-6391  
Fax: 617-222-6358  
E-Mail: karl.bernhardt@keoliscs.com  
Allen Dixon, Sr. Buyer; 617-222-6324  
Fax: 617-222-8668  
E-Mail: allen.dixon@keoliscs.com  
Donna Pursel, Sr. Buyer; 617-222-6378  
Fax: 617-222-8594  
E-Mail: donna.pursel@keoliscs.com

### Buffalo (NY)

#### NIAGARA FRONTIER TRANSPORTATION AUTHORITY

Gauge: 4 ft. 8.5 in.  
Routes: 6.4 Light Rail Route Miles  
Total Cars: 27  
Passenger Cars & Coaches: 27

#### Mailing Address

181 Ellicott St., Buffalo, NY 14203 716-855-7300  
Fax: 716-855-7657  
Web Site: www.nfta.com

Kimberley A. Minkel, Exec. Dir.; 716-855-7369  
Thomas R. George, Dir. Public Transit; 716-855-7390  
John Schaefer, Dir. Eng.; 716-855-7351  
John T. Cox, CFO; 716-855-7250  
Vacant, Dir. EEO; 716-855-7489  
David J. State, Gen. Coun.; 716-855-7686  
George W. Gast, Ch. NFTA Police; 716-855-7666  
Helen Tederous, Dir. Public Affairs; 716-349-0001  
Vacant, Mgr. Rail; 716-842-3502  
Robert Guise, Mgr. Rail Opers.; 716-842-3556  
Michael G. Esford, Mgr. Rail Maint.; 716-842-3550  
James Morrell, Deputy Dir. Public Transit;  
716-855-7300